

# REDCLIFFE SIXTH FORM Y13 Parents/Carers' Information



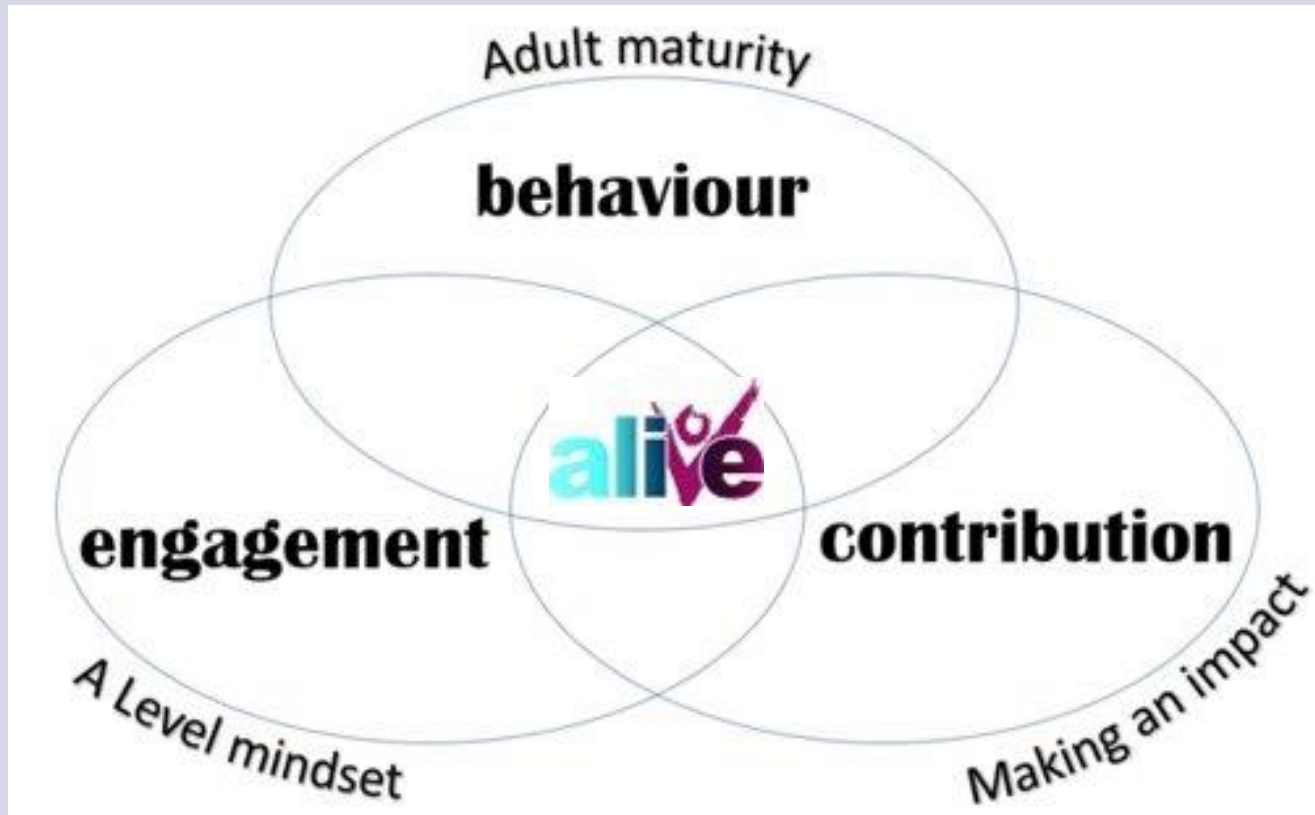
# FORMAT FOR THE PRESENTATION

- Exam results and ethos
- 6th Form ALIVE standards
- Pastoral support and 6<sup>th</sup> form processes
- Study Skills support
- Getting involved as parents/carers
- Preparing to move on

# EXAM RESULTS

<b>KS5 Results</b>	<b>2019</b>	<b>2023</b>	<b>2024</b>
KS5 grades at A+	<b>23.6%</b>	<b>24.4%</b>	<b>26.2%</b>
KS5 grades at B+	<b>49.5%</b>	<b>53.1%</b>	<b>57.8%</b>
KS5 Grades at C+	<b>75.2%</b>	<b>78.1%</b>	<b>79.3%</b>
KS5 Pass rate	98.1%	98.3%	<b>97.5%</b>
KS5 Avg Grade per entry	<b>C+</b>	<b>B-</b>	<b>B-</b>




# 6<sup>TH</sup> FORM STANDARDS



[St Mary Redcliffe and Temple School - Engagement, Behaviour and Contribution Levels \(smrt.bristol.sch.uk\)](http://smrt.bristol.sch.uk)



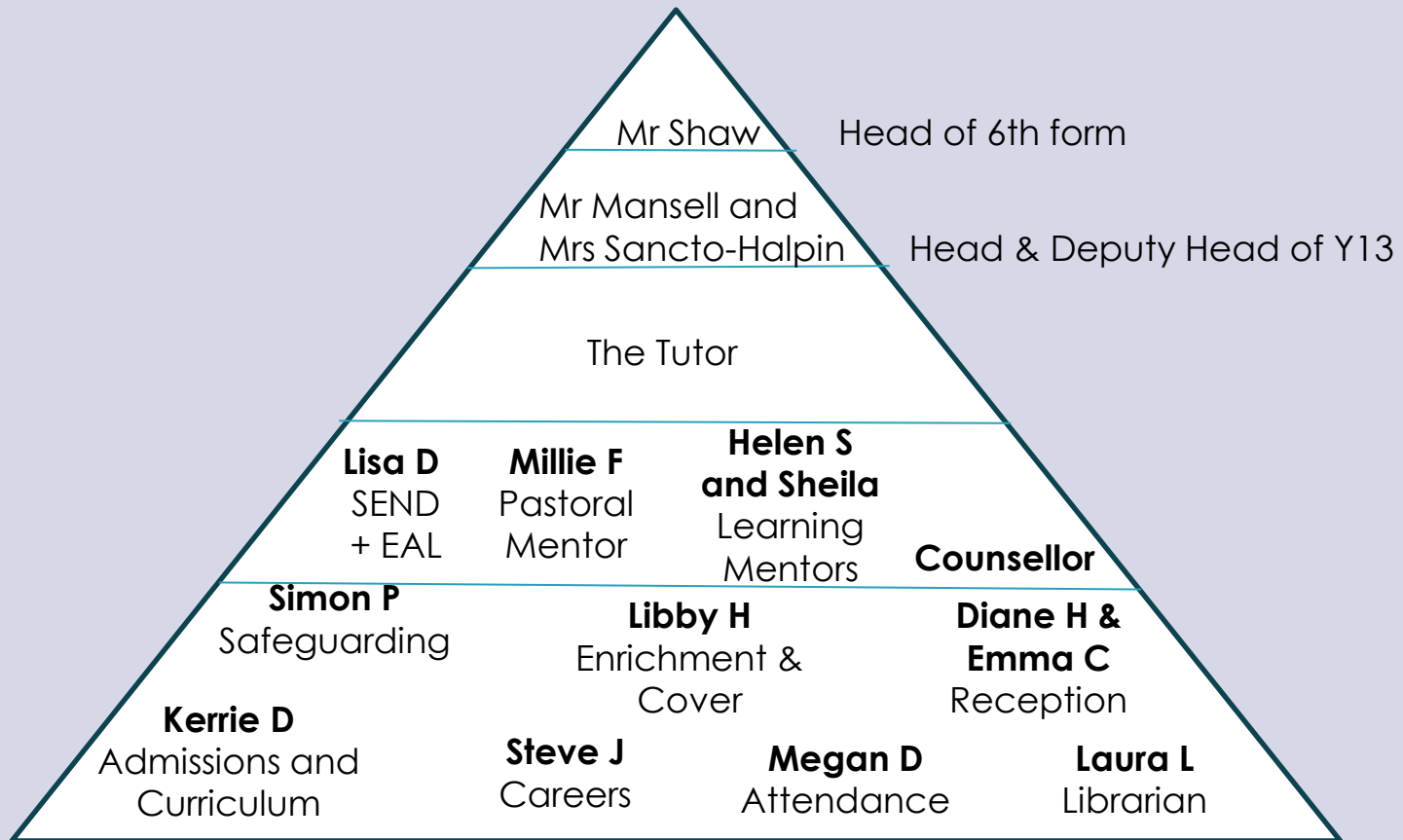
# PLOTTING THE COURSE

A*	Star quality!	
A	A Level <u>mindset</u> and Adult maturity	
B	Beginning the journey, Basic skills and expectations met	
C	Causing concern in behaviours or engagement	
D	Deepening concern	
E	Extreme concern!	

# THE YEAR 13 ACADEMIC JOURNEY

- Teachers are marking and assessing all the time, but we will also have some more formal periods of assessment
- **Thursday 19th December-** Y13 Grade-sheet emailed to students with updated Predicted Grades and Engagement Levels.
- **Monday 13th January- Friday 24th January-** Y13 Mocks. Please note that students will not be off-timetable during these two weeks.
- **Thursday 6th February-** Y13 grade-sheet emailed to students and parents/carers with mock grades, and updated engagement and predicted grades.
- **Wednesday 12th February-** Y13 Parental Briefing at 5pm to provide information on preparing for summer exams, student finance and progression decisions.
- **Thursday 27th February-** Y13 Online Parent/Carers subject consultation evening (you will receive the details for this in January).
- **Wednesday 7th May-** A Level and AS exams start.
- **Friday 17th May-** Last day of normal school for Y13.

# PASTORAL SUPPORT



# PASTORAL SUPPORT

- Tutor support throughout A Levels including the delivery of **VIP and one-to-on tutorials.**
- **REGISTRATION @ 8.30am** once a week on a Wed or Thu
- Tutor will provide key messages for the week and also will have details of attendance.
- Tutor will meet one to one through the year with focus on academic progress and progression planning
- **ASSEMBLY @ 8.30am** once a fortnight on a Tuesday (Week Two). Topics this term include what an A Level Mindset is, Enrichment, the importance of asking for and being open to support, Black History Month, and Raising and Giving.
- We have experts from **Brook** coming in again this year to talk with students about sexual health and well-being including consent.
- Further info through weekly Newsletter.



# INDEPENDENT STUDYING

- Students should expect to do spend **one hour working independently for every hour in a lesson**. So works out at roughly 15 hours for students studying 3 subjects.
- This should be a combination of work set by the teacher and routine study tasks.
- There's no such thing as "no homework".

# THE STUDY SKILLS WEBSITE

- **Our study skills site is accessible via our school website, if you go to 6th form and then study skills.**
- You will find information on the differences between GCSEs and A Levels, what specifications students study at Redcliffe and when you receive feedback and what this looks like.
- You will also find advice and guidance on how students can develop the skillset needed for A Level including how to plan and keep organised and advice and guidance on how students can develop the motivations and attitudes needed to enable them to reach their potential.
- **MORE REVISION FOCUSED RESOURCES COMING SOON.**

# LEARNING SUPPORT

## Sixth Form Learning Support Drop-In

Wednesday lunchtimes in Room 310  
with Inclusion Teacher Lisa Pena Dry

---

For any questions you might have  
about:

- Exam access arrangements for Year 12 students
- Strategies for difficulties such as memory concentration
- Concerns about your own learning, attentional or social communication needs

# SUPPLEMENTARY OPTIONS

- To meet the requirements for full-time study all students will also have an additional option
  - **EPQ**- Submit product/essay, logbook and presentation by Feb half-term
  - **Maths Studies AS equivalent** - Exams in the summer
  - **Super-curricular Study** (wider reading / online learning)
  - **DOE/Work Experience/Volunteering** - an hour a week / 30 hours total
  - **Library lessons** - For students who really struggle to self-organise and meet deadlines
  - **GCSE Maths** - For those that need to continue to study to achieve Grade 4

# ENRICHMENT ACTIVITIES



- Enrichment fair and handbook just released
- Activities on offer include:
  - *Politics, Feminist, BAME and LGBTQ+ Societies*
  - *Medical and Law societies*
  - *Christian Union*
  - *Games club*
  - *Debating, Model United Nations*
  - *Volunteering*
  - *Music including choirs, bands and tuition*

# ATTENDANCE ROUTINES



- Parents/carers call the absence line if ill or email [6thform@smrt.Bristol.sch.uk](mailto:6thform@smrt.Bristol.sch.uk)
- If it is for more than one day parent/carers should call.
- For a doctor's appointment complete an 'absence in advance' form, available from reception / email staff and ask what will be missed.
- All attendance and punctuality issues are taken seriously and chased up.

# TIMINGS OF DAY

- There are 5 one hour sessions per day (except Fridays)
- Friday timetable: each lesson shorter by 10 mins
- Also on the school website in the 6th form tab

Monday-Thursday	
9am – 10am	Period 1
10am – 10.20am	Break
10.20 – 11.20	Period 2
11.20 – 12.25	Period 3
12.25 – 1.10	Lunch
1.10 – 2.10	Period 4
2.10 – 3.15	Period 5

Friday	
9am – 9.50am	Period 1
9.50 – 10.45	Period 2
10.45 – 11.05	Break
11.05 – 11.55	Period 3
11.55 – 12.50	Period 4
12.50 – 1.35	Lunch
1.35 – 2.25	Period 5



# WHAT CAN PARENTS/CARERS DO?

- Don't let **attendance** slip
- Read the weekly **newsletter** and point things out to them
- Contact the tutor if you have concerns
- Watch out for signs of **stress** – let us know
- Don't let **paid work** get out of balance (max 8 hours / week)
- Ask students what they are doing and get them to **talk** about it!
- Offer to **test** them on things – it does help
- Find out how homework is recorded on **Bromcom**
- Make sure they download exam papers and mark schemes from exam-board websites- They do need to test themselves regularly although it does not always have to be completing a past paper



# FINANCIAL SUPPORT

- **Free school meals** - household income/benefits below around £16000
- **Bursary scheme** – means tested for those not on free school meals but supports households with a wider range of incomes:
- **Enabling fund** - for non-bursary students supports with trips and learning / enrichment activities (details on the school website)
- Students needing further information should speak to **Millie Feldman** (based in the office in front of reception) to request assistance.

# THE YEAR 13 PROGRESSION JOURNEY

- Use of Tutorial periods
- Unifrog website – all research including apprenticeship, GAP year, CV writing etc
- SMRT Progression website – all school specific information
- UCAS website – University applications
- Careers advisor

# UCAS

- UCAS predicted grades
- UCAS reference

## Deadlines

- 2nd October 2024 – Music conservatoire
- 15th October 2024 (school deadline 5th October) - early entry deadline (Oxford, Cambridge, Medicine, Dentistry, Vet Science)
- January 29th 2025 – UCAS final deadline for all other courses (**Most students will submit before December**)
- GAP year – we will support

# ADDITIONAL EXAMS

Route	Exam	Deadlines	Key Info
Medicine	UCAT	26th September	Sent directly to university & considered different by each.
Cambridge Oxford	College Admissions	Various – check with colleges	Externally sat at Pearson VUE test centres. Most will be sat in Oct – info on subject pages
Law	LNAT	From 1st Aug	Must be sat by deadline of submissions.
Maths	MAT – Oxford	4th Oct registration	Sat at Pearson VUE test centre by 31st Oct.
	STEP – Cambridge	2025	Contact <a href="mailto:exams@smrt.bristol.sch.uk">exams@smrt.bristol.sch.uk</a>
	TMUA – various universities	From 1st Aug	Must be sat by submission of UCAS application

# COMING UP & OPPORTUNITIES

- February parental briefing includes Uni Finance talk
- Same talk for students during an extended tutor session, open to apply in April
- Bristol Scholars Programme
- 1:1 meetings with career advisor
- Progression blog linked on newsletter – opportunities
- Work Experience- 'Not Impossible'

**ANY QUESTIONS?**

THANK YOU VERY MUCH FOR COMING